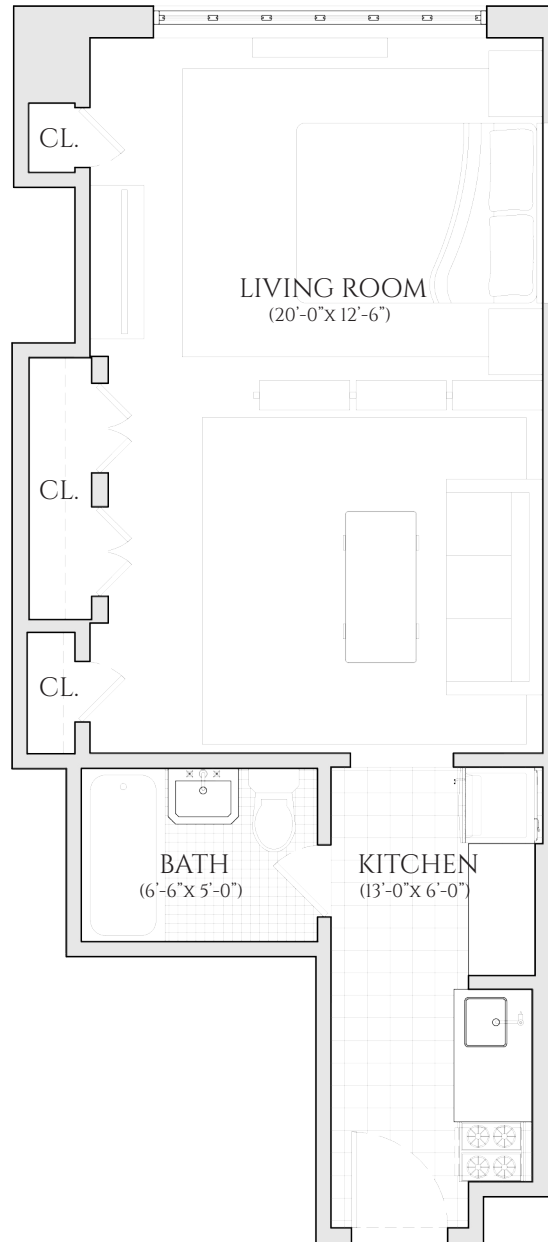


# THE BEAUX ARTS

NO. 307 EAST 44TH STREET



RESIDENCE 13 | FLOORS 2-12  
ONE BEDROOM | ONE BATHROOM

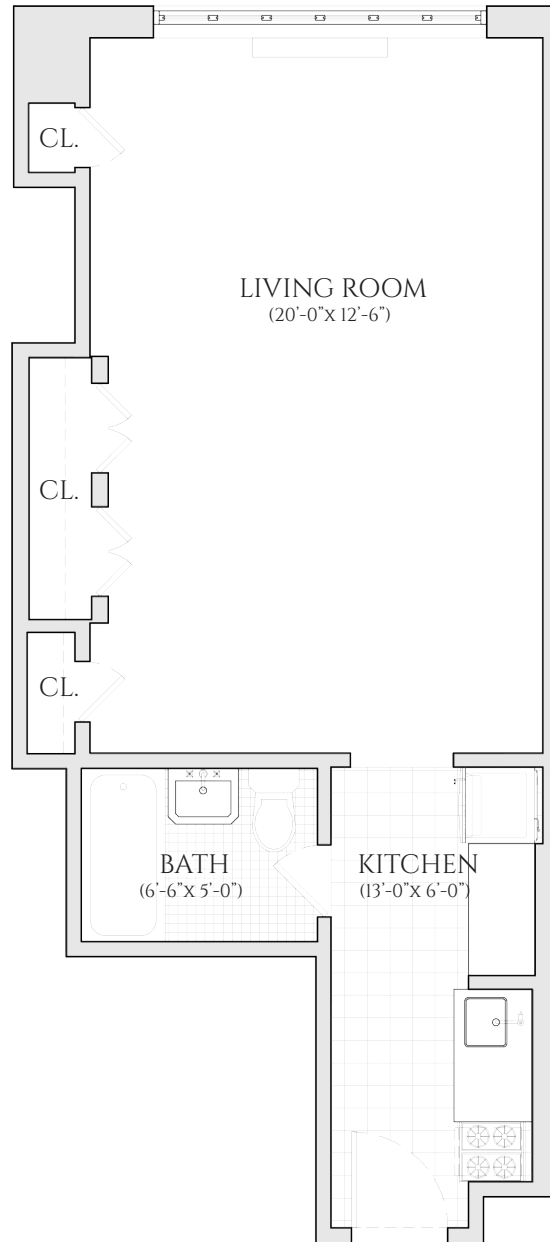


ALL INFORMATION REGARDING THE FLOOR PLAN IS FROM SOURCES DEEMED RELIABLE. HOWEVER, THE BRODSKY ORGANIZATION CANNOT ASSURE ITS ACCURACY AND BEARS NO RESPONSIBILITY FOR ANY ERRORS, OMISSIONS OR MISSTATEMENTS. THE PLAN IS FOR APPROXIMATE INFORMATIONAL PURPOSES ONLY AND SHOULD BE USED AS SUCH BY THE PROSPECTIVE RENTER. ALL DIMENSIONS ARE APPROXIMATE AND SHOULD BE RE-MEASURED BY THE PROSPECTIVE RENTER FOR ABSOLUTE ACCURACY.



# THE BEAUX ARTS

NO. 307 EAST 44TH STREET



RESIDENCE 13 | FLOORS 2-12  
ONE BEDROOM | ONE BATHROOM

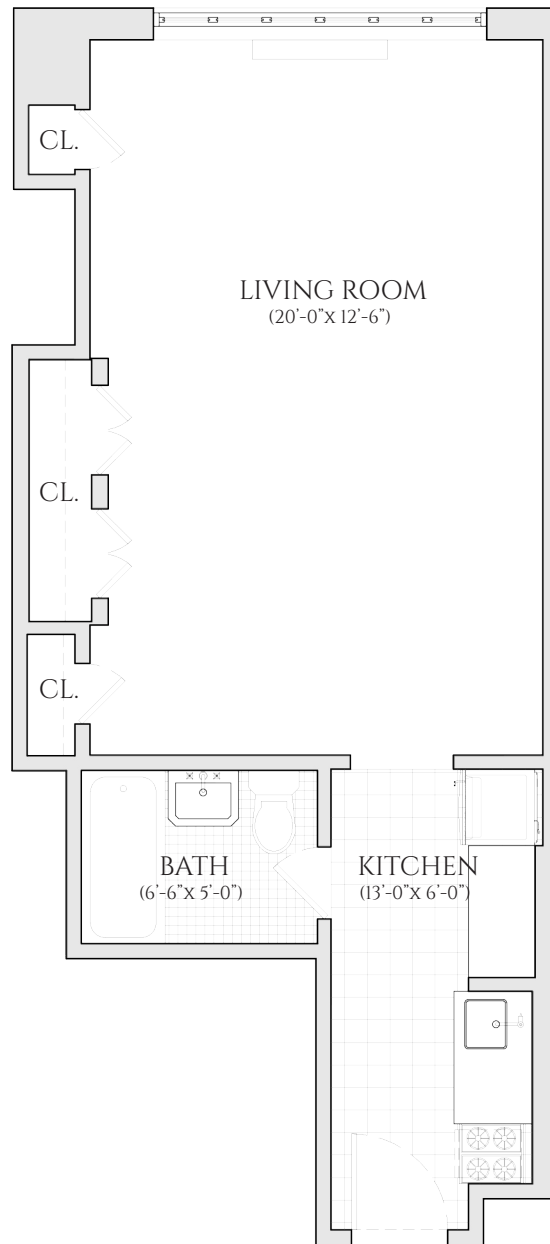


ALL INFORMATION REGARDING THE FLOOR PLAN IS FROM SOURCES DEEMED RELIABLE. HOWEVER, THE BRODSKY ORGANIZATION CANNOT ASSURE ITS ACCURACY AND BEARS NO RESPONSIBILITY FOR ANY ERRORS, OMISSIONS OR MISSTATEMENTS. THE PLAN IS FOR APPROXIMATE INFORMATIONAL PURPOSES ONLY AND SHOULD BE USED AS SUCH BY THE PROSPECTIVE RENTER. ALL DIMENSIONS ARE APPROXIMATE AND SHOULD BE RE-MEASURED BY THE PROSPECTIVE RENTER FOR ABSOLUTE ACCURACY.



# THE BEAUX ARTS

NO. 307 EAST 44TH STREET



TOTAL SQUARE FOOTAGE: 380 SF

RESIDENCE 13 | FLOORS 2-12  
ONE BEDROOM | ONE BATHROOM



ALL INFORMATION REGARDING THE FLOOR PLAN IS FROM SOURCES DEEMED RELIABLE. HOWEVER, THE BRODSKY ORGANIZATION CANNOT ASSURE ITS ACCURACY AND BEARS NO RESPONSIBILITY FOR ANY ERRORS, OMISSIONS OR MISSTATEMENTS. THE PLAN IS FOR APPROXIMATE INFORMATIONAL PURPOSES ONLY AND SHOULD BE USED AS SUCH BY THE PROSPECTIVE RENTER. ALL DIMENSIONS ARE APPROXIMATE AND SHOULD BE RE-MEASURED BY THE PROSPECTIVE RENTER FOR ABSOLUTE ACCURACY.

